

I
N
T
E
R
N
A
T
I
O
N
A
L



JOHNSON & WALES
UNIVERSITY

V
I
E
W
B
O
O
K



YEAR FOUNDED

1914

**FLEXIBLE
ENTRANCE DATES**

UNDERGRADUATE

- September (ESL available)
- December (ESL available)
- March (ESL available)
- June

GRADUATE

- August (ESL available)
- January (ESL available)
- May (ESL available)
- June

TOTAL ENROLLMENT 14,000+
(undergraduate, graduate, and online students at all four campuses)

GRADUATE STUDENTS 900+

ALUMNI FROM 124 COUNTRIES

AVERAGE CLASS SIZE 22.5

STUDY ABROAD 77 PROGRAMS IN 25 COUNTRIES

INTERNATIONAL ENROLLMENT RANKING

Providence Campus ranked **14TH** nationwide for institutions that grant master's degrees.*

SOME OF THE 73 COUNTRIES REPRESENTED AT JWU

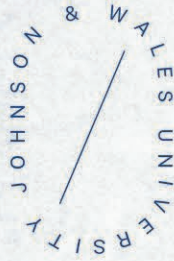
- | | | | |
|-------------|---------|--------------|---------|
| The Bahamas | Jamaica | Panama | Sweden |
| China | Morocco | Saudi Arabia | Turkey |
| India | Nepal | South Korea | Vietnam |

4 CAMPUS LOCATIONS



Providence Campus Only

*Source: Institute of International Education's 2017 Open Doors Report



**MORE THAN AN
EDUCATION**

A PLACE — TO — CALL HOME

As a Johnson & Wales University (JWU) student, you'll earn a valuable degree. You'll make lifelong friends. You'll have the support of faculty, advisors and even other students who will help you find your way around our welcoming campuses. You'll discover mentoring programs with students, staff and faculty who are committed to helping you adapt to your new home in the U.S. We'll tell you about our favorite restaurants and cafés, nearby museums, parks and social events. Our JWU community will stand by you and help you make the most of being a JWU student.

A private, nonprofit university with four campuses in the U.S., JWU makes it a priority to get to know each student personally. Our student services staff and advisors support and advise you on all areas of campus life and academics including course registration, career advice, immigration, visas and more.

JWU's global community includes students from 73 countries and alumni from 124 countries. Our diverse student body exposes you to not only American culture, but to the languages, beliefs and customs of people from around the world, making your experience here more inclusive.

From your first day, and throughout your entire experience at JWU, you'll build relationships with faculty, staff, students and alumni. Whatever your goals and ambitions, and wherever you decide to explore career and life opportunities after graduation — the U.S., your homeland or another country — you'll have JWU contacts to network with around the world.

At JWU, we want you to imagine everything that your future can be. And then we want you to work toward it — because when you work, so does your education. With campuses in Providence, Rhode Island; North Miami, Florida; Denver, Colorado; and Charlotte, North Carolina, each with distinct offerings, your options are as open as your ambitions.



TO
LEARN,

IDO

**JWU WAS AMONG THE FIRST
UNIVERSITIES TO BUILD A CURRICULUM
AROUND HANDS-ON LEARNING.**

Known as “experiential education,” it’s the pinnacle of the JWU experience. From your first day, you’ll be immersed in a professionally-focused curriculum, paired with a strong, diverse liberal arts balance, specifically targeted to the industry of your choice. JWU’s experiential education will ultimately prepare you to be a leader in a wide range of professional fields. Want to work in finance? Start investing. Want to be a successful restaurateur? Get in the kitchen. From taking part in advertising competitions to securing an

internship, how you learn depends on what you want to learn and who you want to learn it with. At JWU you’ll have opportunities to collaborate with fellow students, work with world-renowned companies, or even assist professors with their work. We’re beside you every step of the way to guide you on your path. Work closely with your international student advisor and experiential education advisor to secure an internship or Optional Practical Training (OPT) after graduation. JWU is a leader in providing work experiences during, and after, your education.





CREATE A LIFE YOU'LL LOVE

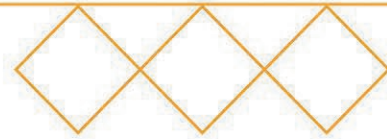
Through education that takes you beyond the classroom, to industry connections that put students to work, we work just as hard as you do to turn your passion into a profession and then bring that profession into the world. JWU cultivates a supportive, caring environment where students and faculty work together to bring out the best in each other. From our writing labs

and coaches to our mentorship programs and faculty and career advisors, you won't be alone in your efforts to succeed academically and to gain the experience needed for the career and the life you want. From your first day until graduation day, there is an entire community behind you to help develop your skills and make the most of your potential.

IN A CLASS OF THEIR OWN

No matter how you're learning — in or out of class — the quality of your education has a lot to do with your professor. At JWU, we have some of the most passionate, dedicated leaders in academia, with years of professional experience to back up their lessons. Our faculty are committed to get to know you personally and to work with you one-on-one to develop your knowledge and skills. They use their experience not only to teach you the way the industry actually works, but to develop innovative programs that directly reflect 21st-century needs.



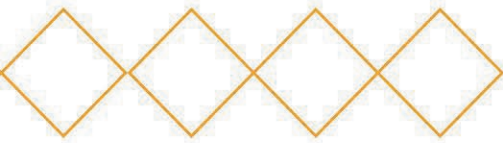


**TRANSFER TO JWU.
GET YOUR DEGREE FASTER.**

Why do almost 1,000 students transfer to JWU every year? We make it easy and worthwhile with our liberal transfer policy, flexible class schedules, class registration priority and more. You can enroll in September, December or March. We'll ensure appropriate academic placement, help you transfer the maximum number of applicable credits and minimize repeat courses.

**ACCELERATED MASTER'S PROGRAM
SAVES TIME AND MONEY.**

You might be the kind of student who not only knows what you want to study, but already has plans to pursue a higher degree. Our Accelerated Master's Program allow you to do just that in as little as five years. You'll be able to earn your bachelor's and master's degrees in less time by taking one or two graduate-level courses at no additional cost during your senior year as an undergraduate student. Accelerated Master's Programs include accounting, data analytics, finance, global tourism and sustainable economic development, hospitality and information technology.

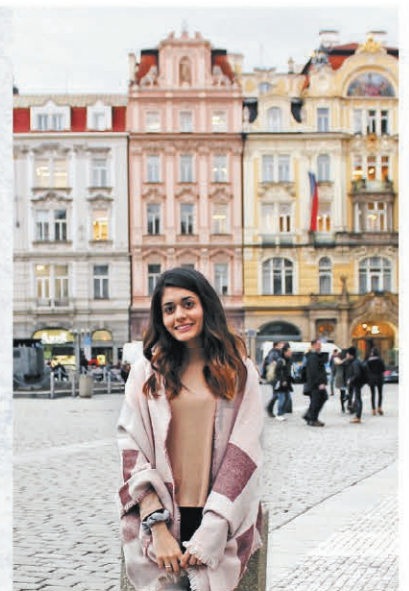


MAKE YOUR WAY



**STUDY
ABROAD
WITH
JWU**

With study abroad programs in locations from Athens to Zanzibar, in areas like community engagement and robotics engineering, you'll gain skills that employers value and make professional connections that could last a lifetime.





ENGLISH - ESL - AS A SECOND LANGUAGE

JWU offers academic acceptance and admission to our English as a Second Language (ESL) program (non-degree), available at our Providence campus. All four of our campuses have resources that support our students to succeed academically through our Student Academic & Financial Services department. Students in our ESL program have access to all that we offer, including on-campus housing, dining, libraries and more.



INTERNSHIPS

DON'T JUST TAKE CREDIT.
EARN IT.

Internships are a core part of our academic programs. We don't just treat them as an elective, or a way to spend the summer between your junior and senior year. They are just as important as any class, with full academic credit and the opportunity to learn valuable lessons, the kind you can only get through first-hand experience. But more importantly, they are a way to launch your career. Last year more than 3,400 JWU students interned at nearly 1,850 companies worldwide.

Some of the national and international organizations and companies our students and alumni have interned or worked for include: Amazon.com, BBDO Worldwide, Bloomberg, Chanel, Dell, Cooking Channel, ESPN, Facebook, Fidelity, Food Network, Hasbro, Heinz, Hill Holliday, Hilton, Marriott International, Johns Hopkins Hospital, Lockheed Martin, MGM Resorts, NBC Universal, ONYX Hospitality Group, Oppenheimer & Co., The Ritz-Carlton, U.S. Soccer Federation, Viacom International and Walt Disney World.

FORWARD



SMALL STATE

BIG

BREAKS

PROVIDENCE, RHODE ISLAND, IS ONE OF THE MOST VIBRANT COLLEGE TOWNS IN THE WORLD.

That's because it's more than a town — it's a city, offering all the benefits of a large urban area. More than 30,000 college students live in Providence, around 8,500 of whom attend JWU. It's also home to artists, professionals, leaders and innovators, making it a culturally diverse urban experience. The city has more restaurants per capita than any other city, many of which were founded and are staffed by our graduates. They call Providence the "Creative Capital" for a reason: It has a thriving

music, arts, and theater scene, and has been ranked "America's Favorite City" by *Travel + Leisure* magazine.

The Providence Campus is JWU's original home, founded in 1914, and is the largest of the university's four campuses in size and enrollment. It's actually comprised of two separate campuses: Downcity and Harborside, both of which offer unique experiences that are still distinctly JWU. And don't worry, shuttles run between the two locations, free of charge for students. With Rhode Island being the smallest state in the U.S., you'll quickly feel at home within the state's friendly and diverse communities.



ONE UNIVERSITY



GET MILES AHEAD
IN THE

MILE HIGH CITY

FORBES RECENTLY INCLUDED DENVER, COLORADO, IN ITS TOP 10 LIST OF "AMERICA'S COOLEST CITIES"

and the best for millennials, businesses and careers. We couldn't agree more. Denver is part big city, part outdoor mecca, and JWU's historic 26-acre campus is perfectly situated to explore both.

The campus is only a 10-minute drive from downtown and a 25-minute drive to the base of the Rocky Mountains. With 300 days a year of sunshine, you can take

advantage of nearby skiing, climbing or hiking opportunities. Explore trendy boutiques and art galleries, head to a show at Red Rocks Amphitheater, or take in a game from one of Denver's seven professional sports teams.

Even though we're located minutes from downtown Denver, the architecture and green space of the JWU campus make it seem worlds away. The Denver environment makes it easy to feel welcome, enjoy the scenery and call it home.



NORTH MIAMI, FLORIDA, IS HALFWAY BETWEEN FORT LAUDERDALE AND DOWNTOWN MIAMI, AND JUST TWO MILES FROM THE BEACH.

This means you'll enjoy a college experience unlike any other. You'll be able to explore a mix of shopping, arts, cuisine and entertainment that reflects South Florida's diverse population, and Miami's reputation as an upscale tourist destination. Though the mention of Miami most likely conjures up images of sand and surf, the city is also the international gateway to the Americas.

Our 29-acre North Miami Campus is a close-knit community where nearly 1,500 students work, live and play together, taking full advantage of the area's sun, sand and culture. *The Wall Street Journal* recently ranked JWU's North Miami Campus "first in diversity" among colleges in the south and third nationwide.



EVERYTHING

UNDER
THE SUN



FOUR CAMPUSES



CHARLOTTE, NORTH CAROLINA, IS ONE OF THE FASTEST-GROWING BUSINESS CENTERS IN THE COUNTRY.

As a JWU student, you will study right in the middle of it all. Our campus is in the heart of the Queen City, walking distance from the BB&T Ballpark, 7th Street Public Market, Romare Bearden Park, the EpiCenter Entertainment Complex and more. Beyond the social opportunities like arts and shopping, Charlotte is filled with restaurants, bars and coffee shops

dominated by JWU graduates as founders, managers and chefs. Charlotte has also been ranked among the best places for business, meaning it's also one of the best places to launch your career. You'll be in the middle of the JWU community whether you are on or off campus.

The campus is home to a Doubletree Hotel where hospitality students can hone their craft, and a Student Innovation Lab, where business students can brainstorm ideas for presentations and entrepreneurial undertakings.

RULE THE

QUEEN
CITY





LIVE AND LEARN AT JWU

JWU BRIDGE

The BRIDGE (Building Relationships, Intercultural Dialogue & Global Engagement) brings together students with diverse backgrounds. Through educational programs, cultural events and social activities, students — especially international students — engage with one another to promote cross-cultural awareness and the free exchange of ideas.

AT JWU, YOU ARE SUPPORTED.

Our International Student Services Office (ISSO) will help you find what you need on and off campus. The ISSO staff will help you transition to life on campus and in the U.S. while assisting you with housing, immigration-related matters, employment authorization, income tax returns and more. Our student volunteers will help you come to know and love JWU as much as they do.

FIRST-YEAR AND ON-CAMPUS HOUSING

Shortly before orientation, if you are a first-year or on-campus student, you will be able to move into your residence hall, which generally has two- or four-person rooms with a bathroom, along with areas for studying, recreation and laundry. Graduate students may live on campus in apartment-style housing.

Our four campuses are located in small, manageable and safe cities. To make your experience at JWU comfortable, only JWU students and employees have key passes to enter our locked residence buildings. Our diligent Safety & Security staff work around the clock to maintain secure living and learning environments for you and your classmates.

ARRIVAL SERVICES

Our arrival services (for students who send us their travel plans) include transportation from the local airport. After you arrive, an international coordinator will help you transition into campus life.

If you transfer to JWU from another college or university, please contact the International Student Services Office at isa@jwu.edu for your arrival services information.





OFF-CAMPUS HOUSING

If you will be living off campus, we will help you find housing, and you will have two nights of complimentary accommodations while finding and moving into your new home. You can search at jwu-pvd.jumpoffcampus.com, a website that helps you connect with local landlords and realtors in the Providence area. The North Miami, Denver and Charlotte campuses can assist with your search for off-campus housing options in their local areas.

COLLEGE IS MORE THAN ACADEMICS.

What's the best way to get to know other students and make lifelong friends? Get involved with athletics, social activities — such as JWU World Fest and Holi — and student organizations. We have more than 200 organizations universitywide including the Cultural Connections Club, Caribbean Student Association, Global Citizens Program, JWU Hillel, Saudi Club, Indian Student Association, Namaste Nepal and Student Government Association.

ATHLETICS, RECREATION AND INTRAMURALS

Each campus offers its own distinct set of varsity and intramural teams, club sports and state-of-the-art facilities. Spin the ball on a ping pong table in Providence, get in the game at North Miami's outdoor soccer field, step on a bike for a spin class in Denver, or wind down with a yoga class in Charlotte.

2018-19 TUITION AND FEES

Undergraduate Programs

Tuition and Fees \$32,091 or \$33,291**

Housing \$9,474*

Meal Plan \$4,443*

All Other Living Expenses \$1,500

Student Health Insurance \$1,848

Total \$49,356 or \$50,556

Graduate Programs

MBA/M.S. Per 3.0 semester credit course: \$2,106

MBA — Denver Campus Per 3.0 semester credit course: \$2,225

Pre-MBA for International Students Per term: \$5,000

Undergraduate Prerequisites

Per 4.5 credit course: \$981

Providence Campus International Student Services Fee: \$1,200 per academic year or \$600 per semester

English as a Second Language

Tuition Per Term (undergraduate): \$5,000

Tuition Per Semester (graduate): \$5,000

SCHOLARSHIPS

Accepted international undergraduate students are eligible for up to \$20,000 per year in merit scholarships. Eligibility for scholarships, renewable for up to four years, is based on your GPA. No additional information is needed to apply for scholarships.

CONNECT WITH US

For more information or to connect with an international representative, visit jwu.edu or send an email to jwuint@admissions.jwu.edu.

NEXT STEPS

After you apply, your next step is to submit your secondary and post-secondary transcripts or credentials and any test scores you have from English proficiency exams, if available. Visit jwu.edu/international for more information.

*Total per year amounts can vary depending on housing and meal plan options.

**Higher total amount for Providence Campus includes a \$1,200 International Student Services Fee.



DEGREE PROGRAMS

Programs of study are subject to change. To see the most recent offerings at each campus, visit jwu.edu/catalogs.

● Providence ● North Miami ● Denver ● Charlotte

Undergraduate Studies

Accounting	●			
Advertising & Marketing Communications	●			
Applied Food Science, Innovation & Technology (B.S.)*/ Baking & Pastry Arts**				●
Applied Food Science, Innovation & Technology (B.S.)*/ Culinary Arts**				●
Baking & Pastry Arts (associate degree)**	●	●	●	●
Baking & Pastry Arts (B.S.)/Baking & Pastry Arts**	●			
Baking & Pastry Arts and Food Service Management (B.S.)/Baking & Pastry Arts**	●	●	●	●
Biology	●			
Business Administration	●	●	●	●
Business Studies	●	●	●	●
Computer Science	●			
Computerized Drafting (A.S.)	●			
Corporate Accounting and Financial Analysis				●
Criminal Justice	●	●	●	
Culinary Arts	●	●	●	
Culinary Arts (associate degree)**	●	●	●	●
Culinary Arts and Food Service Management (B.S.)/Culinary Arts**	●	●	●	●
Culinary Nutrition	●	●	●	
Culinary Nutrition (B.S.)/Culinary Arts (A.A.S.)***				●
Culinary Science & Product Development	●	●		
Cyber Threat Intelligence & Defense	●			
Digital Marketing & Social Media	●			
Economics	●			
Electronics Engineering	●			
English as a Second Language (ESL) (non-degree)	●			
Entrepreneurship	●	●	●	
Equine Business Management/Non-Riding	●			
Equine Business Management/Riding	●			
Equine Science	●			
Fashion Merchandising & Retailing	●	●	●	●
Finance	●			
Food & Beverage Entrepreneurship (B.S.)/ Baking & Pastry Arts**	●	●	●	●
Food & Beverage Entrepreneurship (B.S.)/ Culinary Arts**	●	●	●	●
Graphic Design	●			
Health Science	●	●		
Hotel & Lodging Management	●	●	●	●
Human Resource Management	●			
Integrated Product Design	●			
International Business	●	●		

Liberal Studies	●	●	●	
Management	●	●		
Marketing	●	●	●	●
Media & Communication Studies	●	●	●	●
Organizational Risk and Cyber Security Management	●			
Political Science	●			
Psychology	●	●	●	
Public Health	●	●	●	
Restaurant, Food & Beverage Management	●	●	●	●
Robotics Engineering	●			
Sociology	●			
Sports, Entertainment, Event — Management	●	●	●	●
Tourism & Hospitality Management	●	●		

Graduate Studies

General MBA	●	●	●	
with concentration in				
Accounting	●			
Finance	●	●	●	
Global Fashion Merchandising and Management	●			
Hospitality	●	●	●	
Human Resource Management	●	●	●	
Information Security/Assurance	●	●	●	
Information Technology	●			
Nonprofit Management	●	●	●	
Operations and Supply Chain Management	●	●	●	
Organizational Leadership	●	●	●	
Organizational Psychology	●	●	●	
Sport Leadership	●	●	●	
One-Year MBA	●			
M.S. Degrees in				
Addiction Counseling	●	●	●	
Clinical Mental Health Counseling	●			
Data Analytics	●			
Finance	●			
Global Tourism and Sustainable Economic Development	●			
Human Resource Management	●			
Information Security/Assurance	●			
Sport Leadership	●			

* Students should confirm their intent by applying by the completion of freshman year. Students will need approval from the department faculty.

** Associate degrees in Baking & Pastry Arts and Culinary Arts are offered at all four campuses. Associate degree program is an A.S. degree when offered in R.I., Fla., Colo. and an A.A.S. degree in N.C.

*** Pending approval by UNC Board of Governors.

NOTICE OF NONDISCRIMINATION: Johnson & Wales University does not discriminate unlawfully on the basis of race, religion, color, national origin, age, sex, sexual orientation, gender identity or expressions, genetic information, disability, status as a protected veteran, pregnancy or marital status, or any other unlawful basis in admission to, access to, treatment of, or employment in its programs and activities.